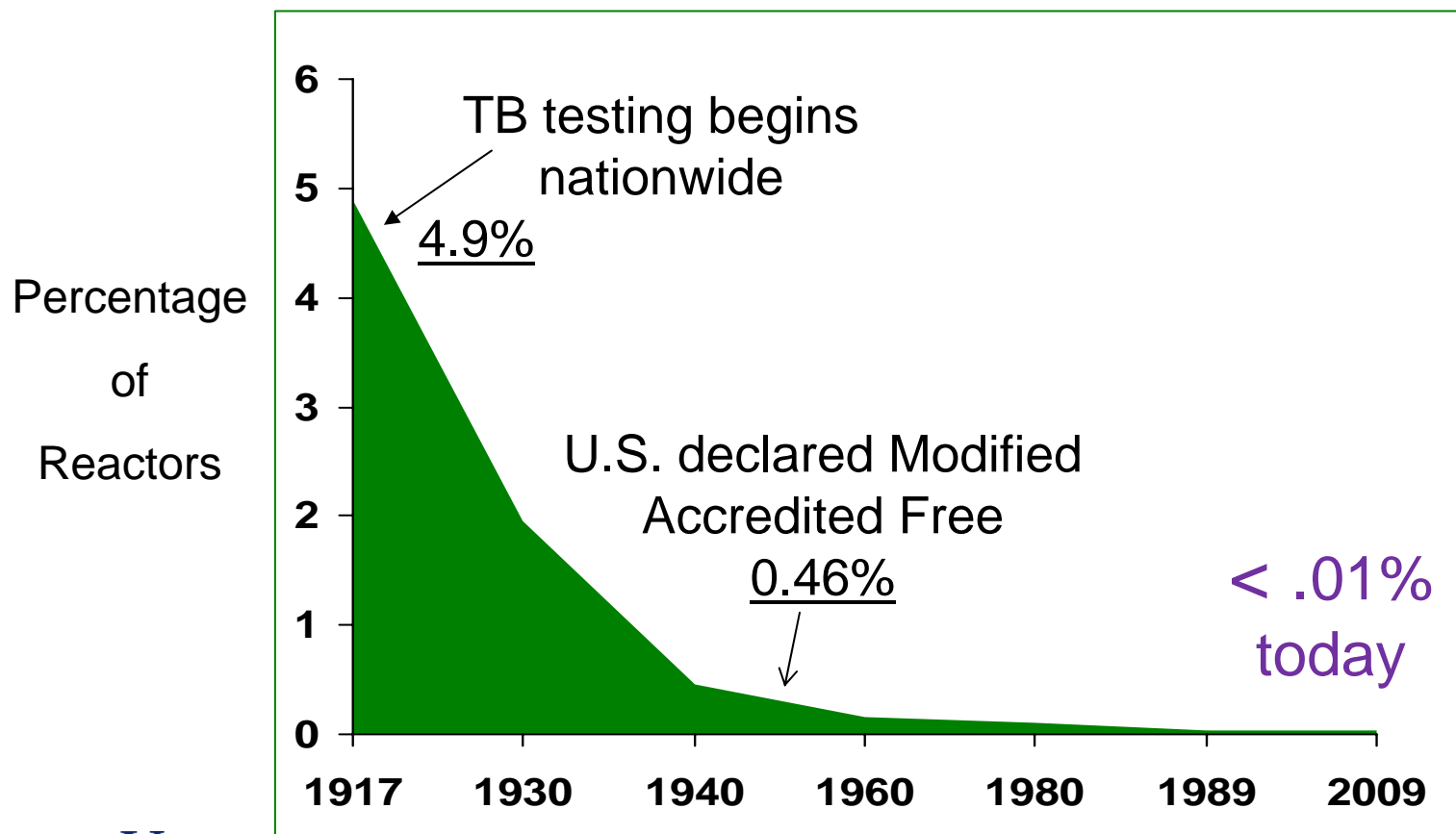


# Progress & Challenges to Eliminating TB in Livestock in the USA



*Presented by*  
Robert M. Meyer DVM, MS  
Regional Epidemiologist  
USDA APHIS Veterinary Services

# Percentage of U.S. Cattle Reacting to the TB Test 1917 - 2009



# Strategy Used to Combat TB

- Cooperative effort between USDA – States – Industry
- “Down-the –Road” Herd Testing; 1917 – 1950’s
- Dairy herds tested initially
- Expanded to beef cattle herds quickly



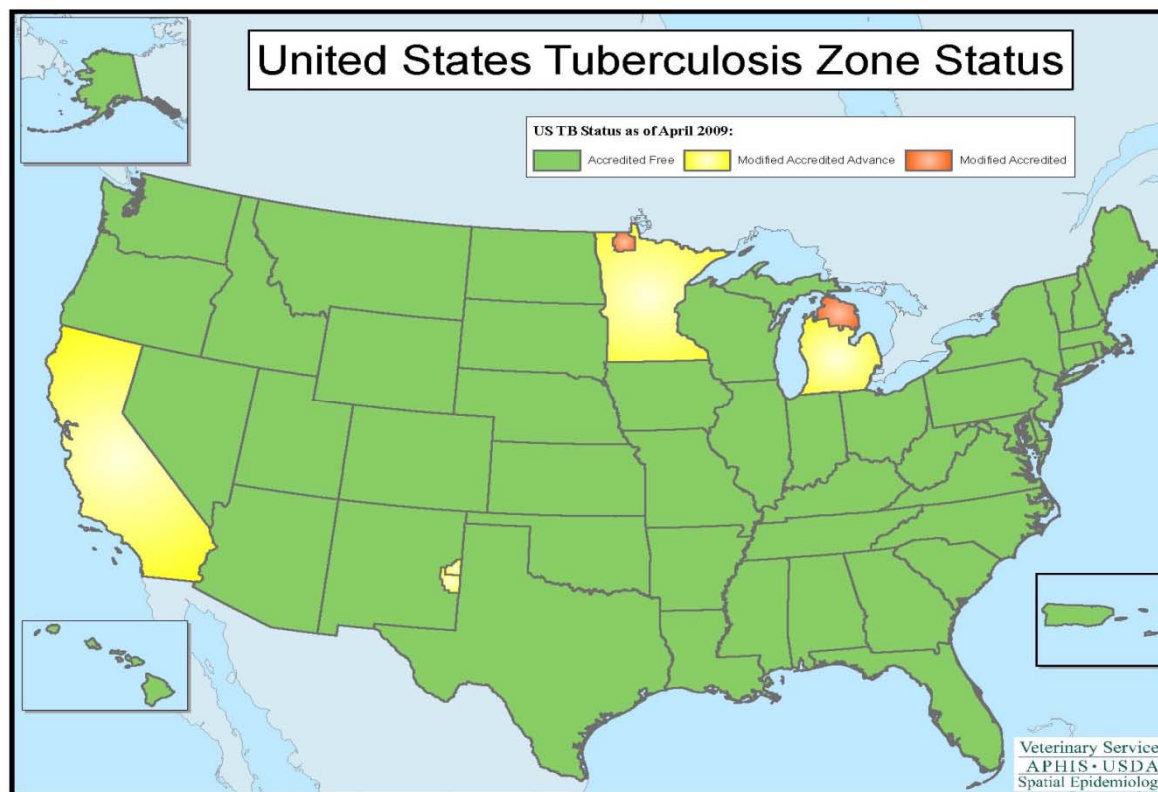
## Additional Surveillance added..

- In 1960's – Slaughter surveillance added
- Epidemiologic investigation of TB-positive cases
- Tracing & testing of origin herds to confirm infection
- Incentive program started for inspectors finding last few cases of TB



# US Cattle Free of TB by OIE Standards

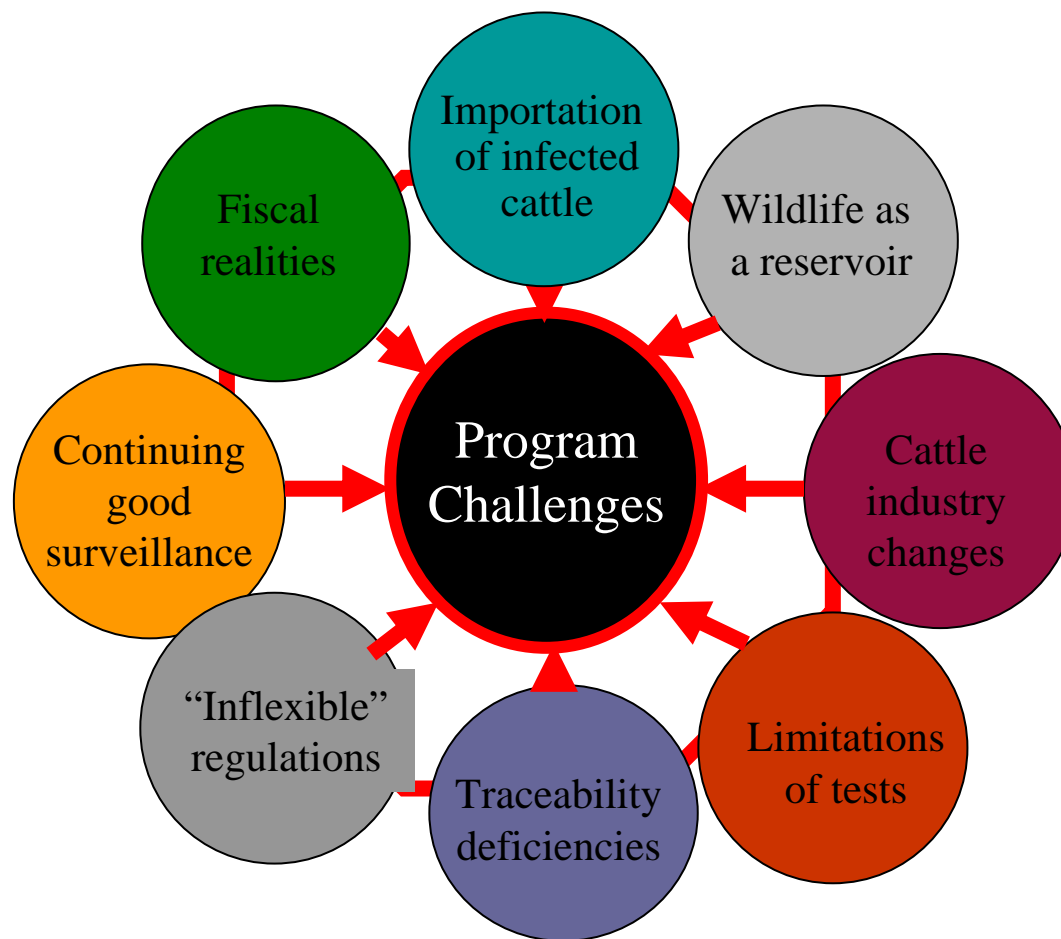
Herd prevalence ~ 0.0009%



# TB Outbreaks in U.S. Livestock Herds 2008 - 2010

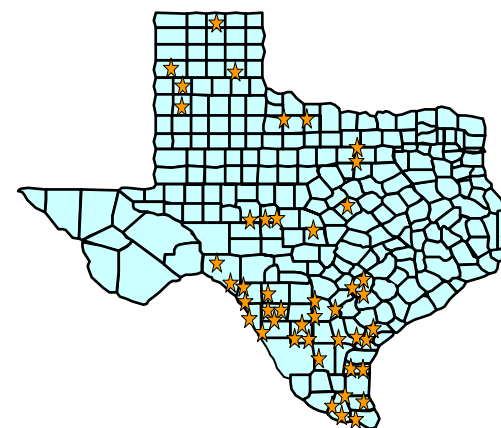
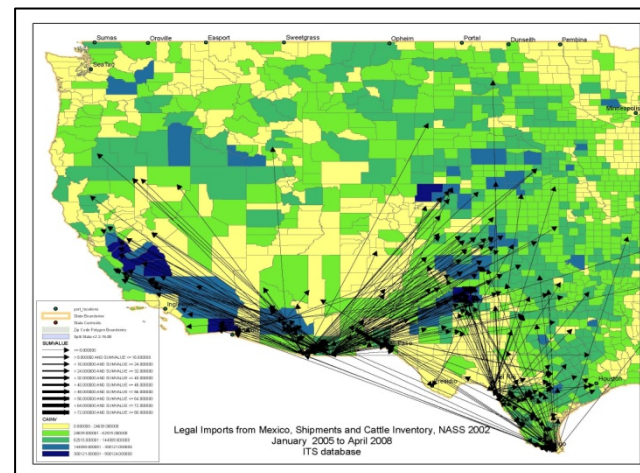


# TB Program Challenges



# Importation of Infected Cattle

- 1,000,000 Mexican-origin steers imported yearly
- Reside on pasture prior to finish feeding in TX & other western U.S. states
- **Concern:** Exposure & re-infection of U.S. cattle herds



Safeguarding Animal Health



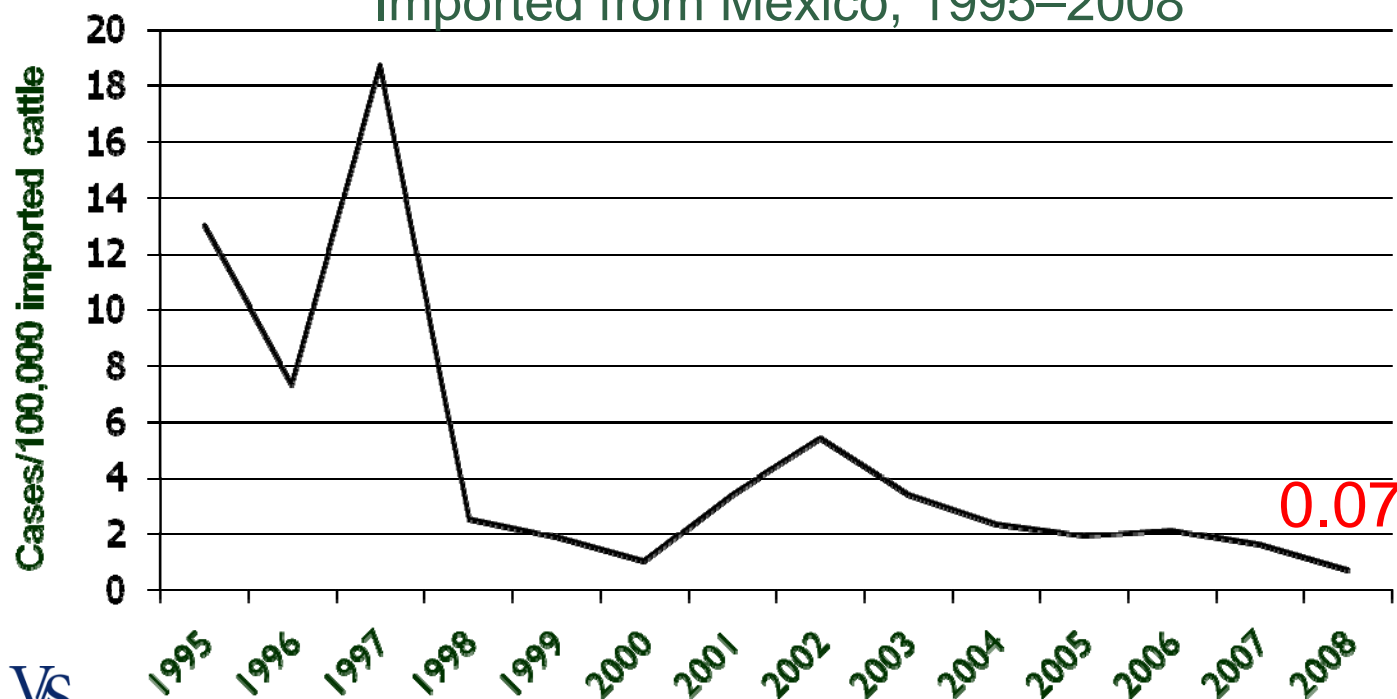
# Mitigating the Risk

- DNA evidence supports that “spill-over” infection has occurred.
- Rodeo-type cattle are higher-risk of infection.
- Mixing of heifers in feedlots.
- **Challenge:** Reduce prevalence of TB in imports & prevent mixing without impacting trade.



# Prevalence Rates Decreasing in Imported Cattle

TB Cases Identified per 100,000 Cattle Imported from Mexico, 1995–2008



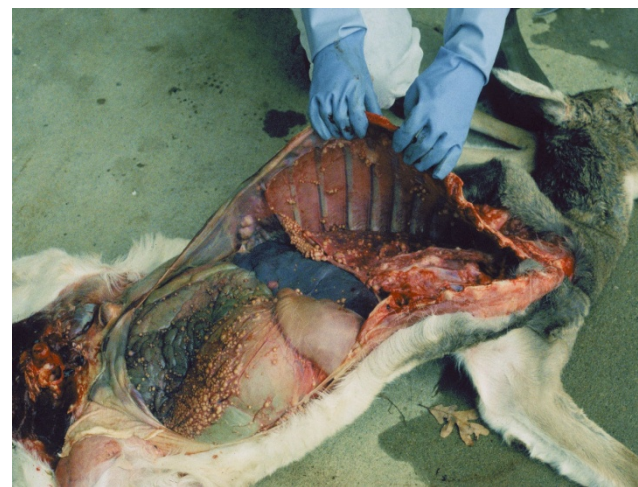
Safeguarding Animal Health

# TB in Wildlife

- TB detected in wildlife in two locations in continental US.



Animals found with  
TB in Michigan

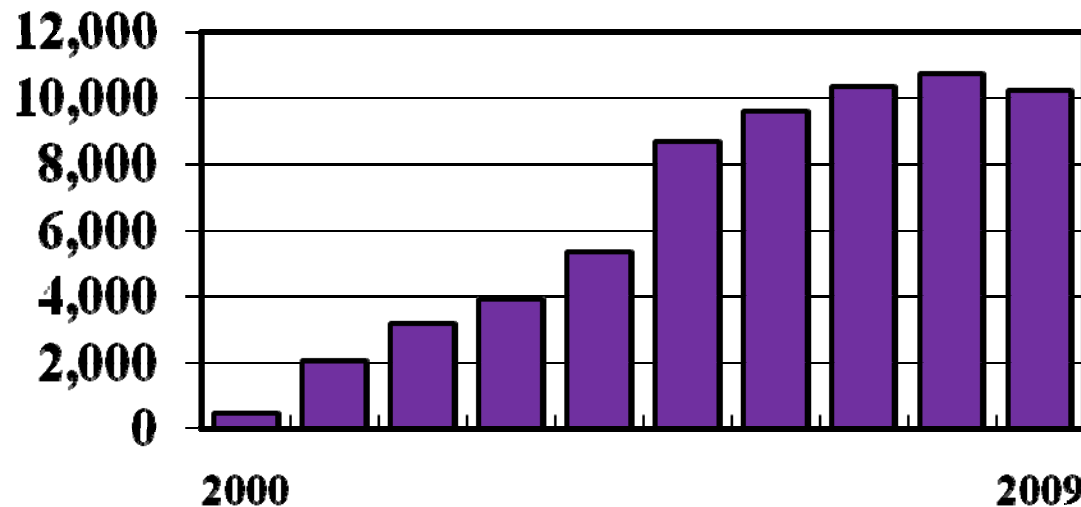


Wild deer with TB in  
Minnesota



## Continue Good Surveillance

- Campaign started in 2000 to submit more suspicious “granulomas” for diagnosis from adult, slaughter cattle
- Significant increase: <1,000 in 2000; >10,000 in 2009



## Changes in Industry Practices

- Tendency toward fewer, but larger agricultural enterprises
- TB disease management requires more \$\$ now than ever!
- Must re-evaluate TB disease management policies
- Develop new tools



Safeguarding Animal Health

# Questions?

