

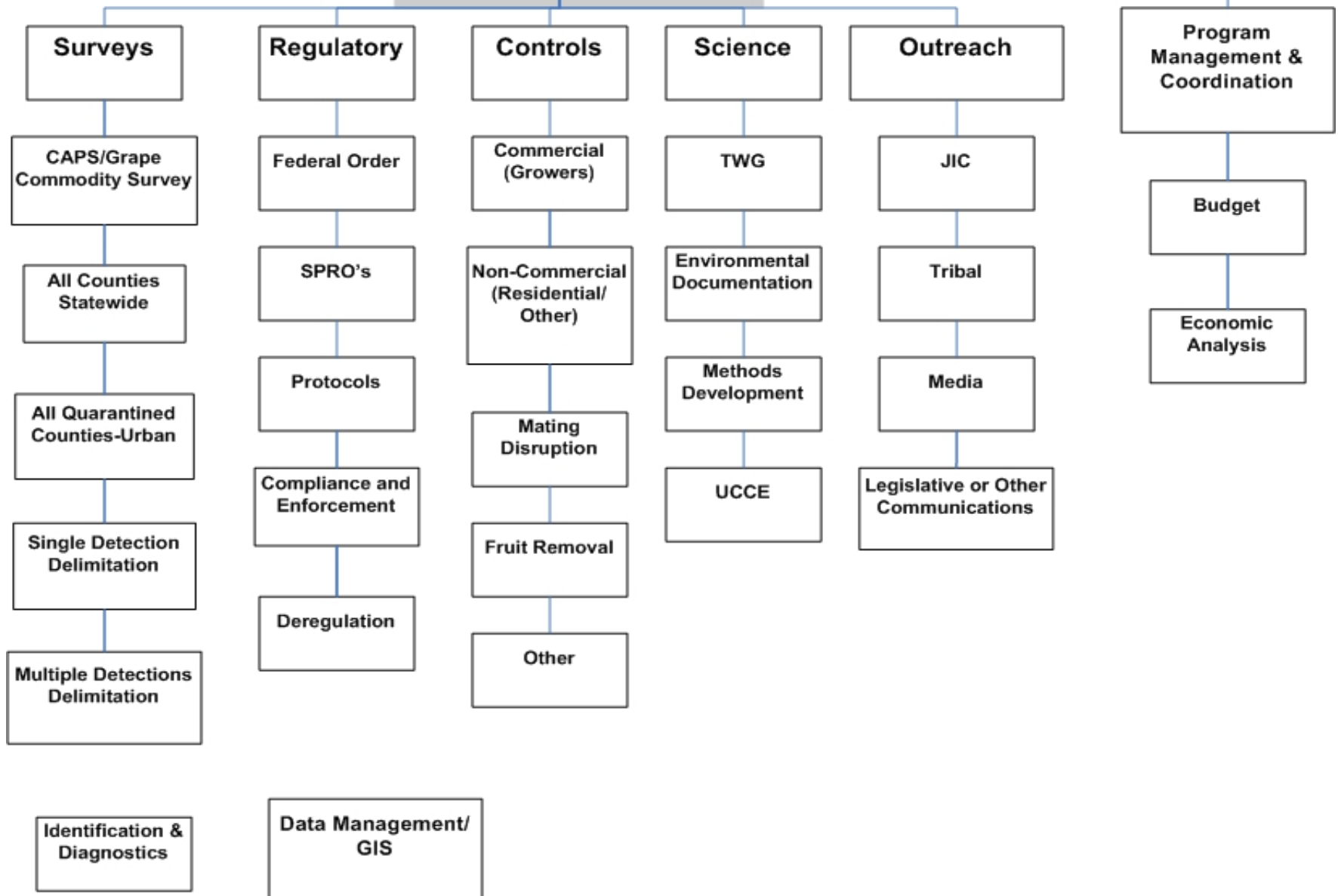
European Grapevine Moth Program-- California



- **Components of Program**
- **Roles & Responsibilities**
- **2010 Season Overview**
- **2011 Season Overview**



EGVM Program Components



European Grapevine Moth (EGVM)

Roles and Responsibilities

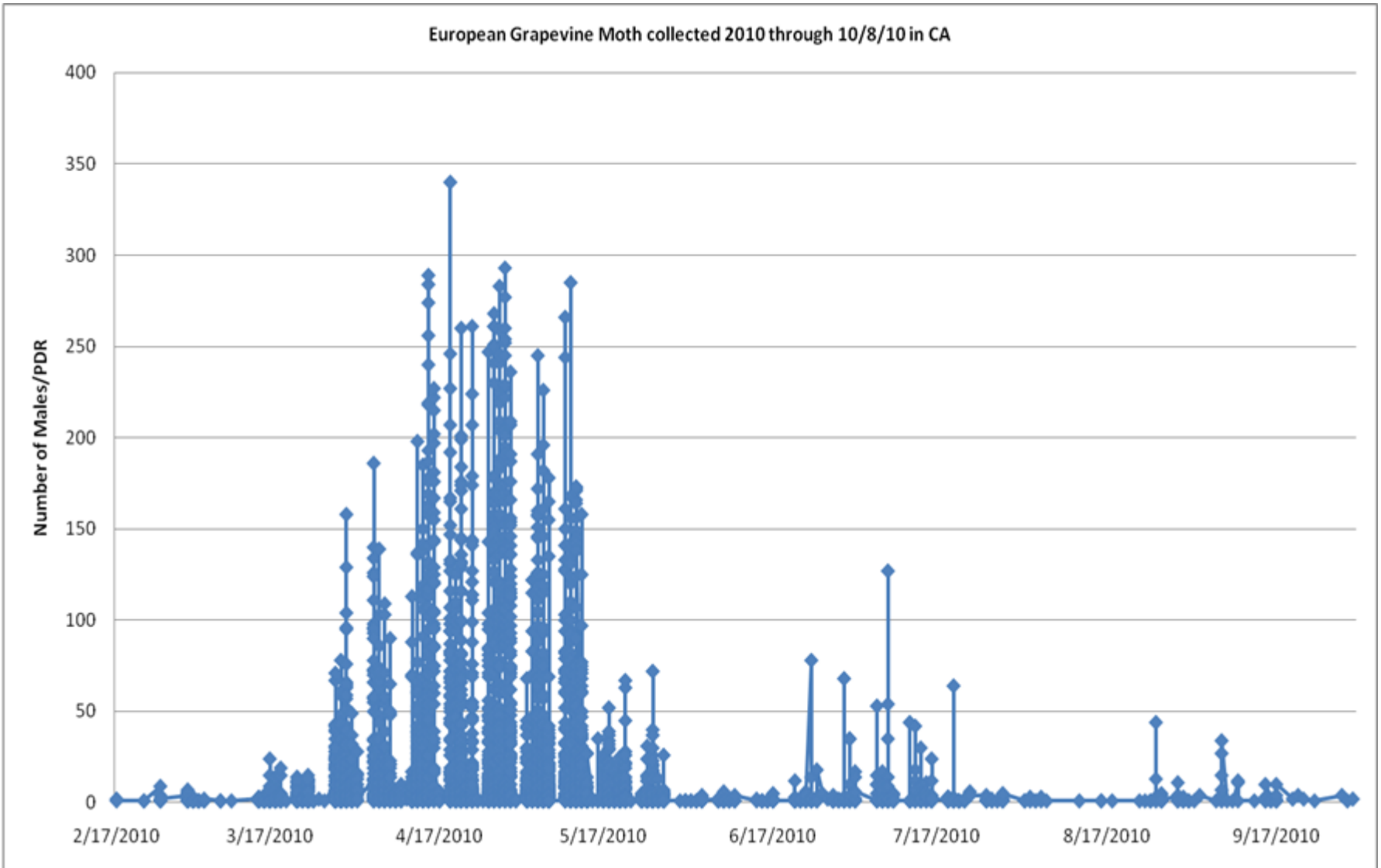
Program Element	California Department of Agriculture (CDFA)	California Counties	APHIS	University of California Extension Service	Industry & Growers
1. Data Management (including GIS)	✓	✓	✓	✓	
2. Surveys	✓	✓	✓	✓	
3. Controls	✓		✓		✓
4. Identification & Diagnostics	✓		✓		
5. Science			✓	✓	
6. Regulatory	✓	✓	✓		
7. Outreach	✓	✓	✓	✓	✓
8. Program Management & Coordination	✓	✓	✓		

2010 Season Summary

EGVM (Adult) Positive Totals										
County	February	March	April	May	June	July	August	September	October	Total
Fresno	0	0	2	4	5	0	0	0	0	11
Mendocino	0	0	13	22	0	0	1	0	0	36
Merced	0	0	0	4	0	0	0	0	0	4
Monterey	0	0	0	1	0	0	0	0	0	1
Napa	23	4,914	66,607	27,677	334	983	113	172	8	100,831
San Joaquin	0	0	0	0	0	0	2	0	0	2
Santa Clara	0	0	0	0	0	0	0	3	0	3
Santa Cruz	0	0	0	0	0	0	0	1	0	1
Solano	0	0	3	5	3	0	0	0	0	11
Sonoma	0	1	14	9	12	18	3	1	1	59
Total	23	4,915	66,639	27,722	354	1,001	119	177	9	100,959

Immature = Larva or pupa. Total EGVM includes USDA phenology traps and UC Extension traps that were submitted to the CDFA Pest Diagnostic Center.

European Grapevine Moth Program-2010



European Grapevine Moth Program-2010

- **No detections outside California**
- **Over 40,000 traps in 46 counties in California**
- **9 areas under quarantine for multiple finds**
 - ❖ **2,091 square miles = 1,338,235 acres**
 - ❖ **Lake/Napa/Solano/Sonoma:**
 - 1518 square miles = 971,644 acres**
 - ❖ **1st generation = 99,349 detections (February 17 – June 10, 2010)**
 - ❖ **2nd generation = 1,319 detections (June 11 – August 10, 2010)**
 - ❖ **3rd generation = 291 detections (August 11 – October 8, 2010)**
- **4 areas under single find delimitation**



Legend

- EGVM Quarantine (9-20-10)_2,091 sq miles
- Counties with EGVM traps thru Oct, 2010
- Vineyards

0 20 40 80 120 160 200 Miles

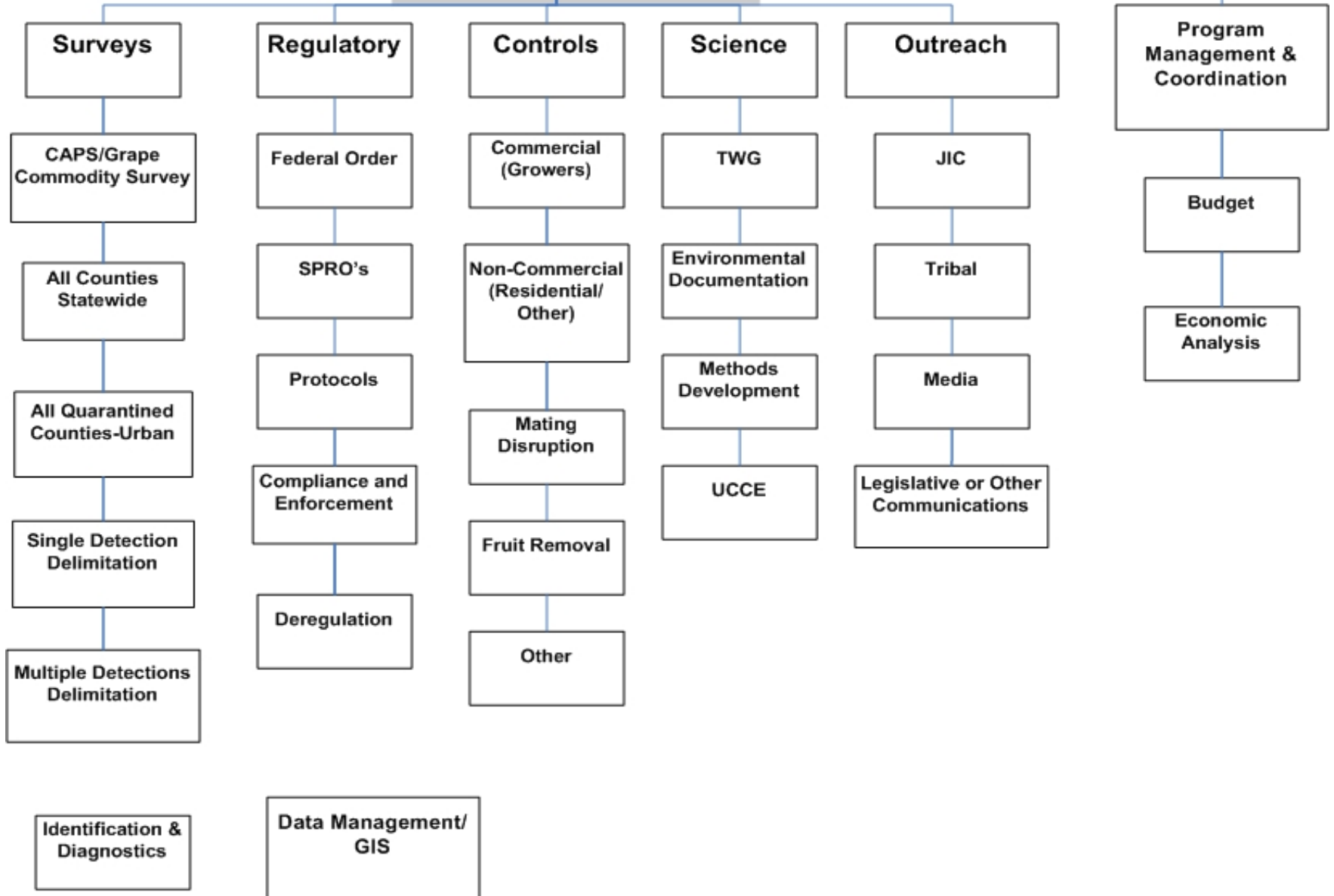
European Grapevine Moth Program-2010

- **6 residential areas with fruit removal and/or Bt treatments**
- **Mating disruption applied in two areas**
- **Numerous grower treatments in all commercial areas---1000 m radius around detections**
- **Numerous outreach initiatives (grower, tribal, etc)**
- **5 regulatory protocols**
- **Federal Order + 2 revisions**
- **Regulatory post harvest treatment**
- **> 4000 documents issued** (Compliance Agreements & Certifications)

European Grapevine Moth Program-2010

- **Partnerships with Cooperative Extension, international scientists and industry groups, state and counties**
- **Share information with trading partners**
- **Technical Working Group**
- **Methods Development initiatives**
 - ❖ Cooperative Extension (UCCE)
 - ❖ Center for Plant Health Science & Technology (CPHST)
- **Environmental initiatives**
 - ❖ Statewide Environmental Assessment (EA)
 - ❖ Environmental Risk Assessment & Environmental Impact Report
- **Economic initiatives**
 - ❖ Economic Analysis

EGVM Program Components



European Grapevine Moth Program-2011

- Revised survey plan with high density surveys
- Federal Order Newly Revised for new exemptions
- 3 of 5 Regulatory Protocols Newly Revised
- Non-Commercial Controls (urban & riparian)
- Complete Environmental Documentation
- Refine Methods Development
- Protocol for Potential Deregulation

European Grapevine Moth Program-2011

Revised survey plan with added high density survey:

- ❖ **25 traps per square mile in commercial vineyards in all counties (statewide survey);**
- ❖ **25 traps per square mile in commercial and residential areas within the 5 mile quarantine area (all 8 areas);**
- ❖ **100 traps per square mile within 500m of all 2010 detections;**
- ❖ **5 traps per square mile in urban and rural residential areas.**

European Grapevine Moth Program-2011

Protocol for Potential Deregulation (4 counties):

- ❖ Fresno, Mendocino, Merced, San Joaquin;
- ❖ Detection, urban and high density surveys for 3 generations;
- ❖ Chemical control for 1st generation within 500m of 2010 detections;
- ❖ No mating disruption;
- ❖ Residential areas within 500m of 2010 detections: chemical control in 1st generation or fruit/flower removal in first 2 generations;
- ❖ Based on day degree model.
- ❖ Any detection will negate potential release.

European Grapevine Moth Program-2011

Napa, Sonoma, Solano and Santa Clara remain regulated:

- ❖ Detection and urban survey;**
- ❖ Chemical control within 500m of 2010 detections for first 2 generations;**
- ❖ Mating disruption for 3 generations;**
- ❖ Residential areas within 500m of 2010 detections: chemical control in first 2 generations or fruit/flower removal in first 2 generations or mating disruption for 3 generations.**

Questions?

Thank you